

4PHP15E

15 SEER Heat Pump Packaged Unit

Product Specifications

Form No. 4PHP15E-100 (05/2013)

Refrigerant System

- Heavy duty, high efficiency scroll compressor
- Copper tubing with enhanced fin coils
- R410A refrigerant environmentally friendly

Cabinet Construction

- Insulation to minimize heat loss plus reduce sound
- Baked pre-painted steel cabinet finish
- Easy service access
- Louvered grill to protect condenser coil
- One piece "no leak" top design

Blower

- Insulated compartment to reduce sound
- Easy service split-ring design with quick plug-in-wiring
- ECM variable speed motor for low maintenance and maximum efficiency

Controls

- Trade available components
- Defrost control features built in diagnostics for easier service
- Defrost control has short cycle protection to protect the compressor
- Defrost cycle is field selectable 30/60/90 minutes
- Defrost control is Quiet Shift™ capable
- High pressure switch for system protection
- Color coded wiring for easy service

Installation

- Horizontal or down discharge, duct covers provided

Accessories

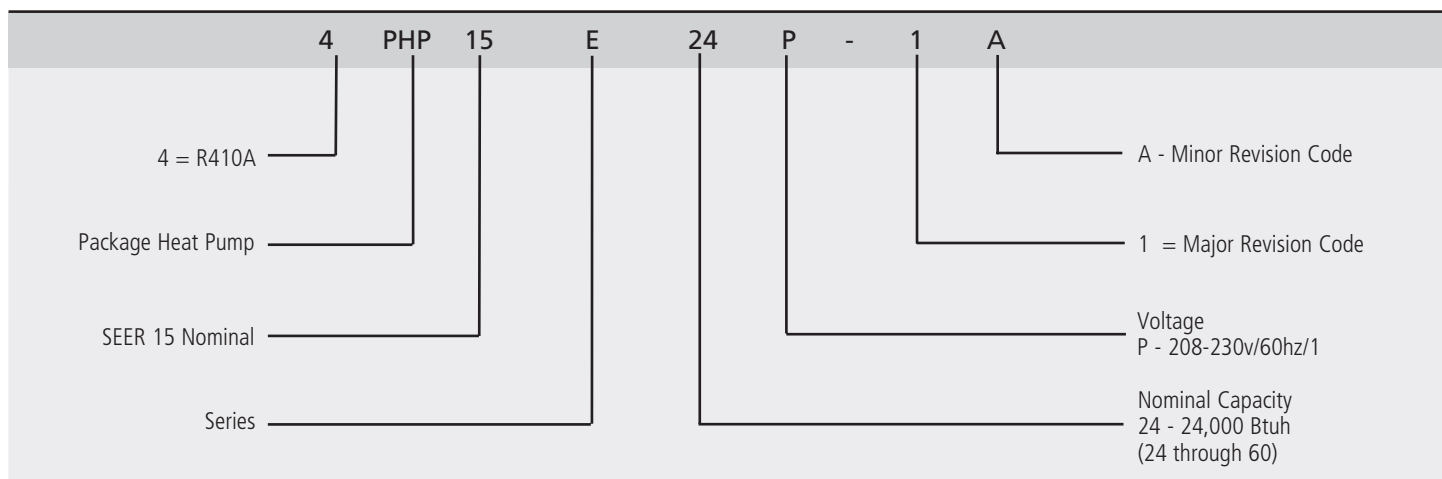
- Hinged Roof curb 8" and 14"
- Lifting Brackets
- Filter Rack Kit
- Electric Strip Heat Kits (15 - 20 kW)
- Single Point Power Entry Kit



Warranty

- 10 year limited parts warranty available. See limited warranty document for details.

Model Number Guide



Electrical and Physical Data

Model	Voltage/HZ/ Phase	Voltage Range	Min. Circuit Amp.	Max. Over Current Device (amps)	Compressor		Condenser Fan Motor			Indoor Blower Motor		Refrig. Charge	Shipping Weight (lbs.)
					Rated Load (amps)	Locked Rotor (amps)	Rated Load (amps)	Rated HP	Nom. RPM	Rated Load (amps)	Rated HP		
4PHP15E24P	208-230/60/1	197-253	23	30	13.5	59	1.1	1/5	1075	2.9	1/3	123	380
4PHP15E30P	208-230/60/1	197-253	24	35	14.1	73	1.1	1/5	1075	2.9	1/3	129	380
4PHP15E36P	208-230/60/1	197-253	28	40	16.6	79	1.1	1/5	1075	3.7	1/2	141	400
4PHP15E42P	208-230/60/1	197-253	31	45	17.9	112	1.7	1/4	825	6.1	3/4	169	509
4PHP15E48P	208-230/60/1	197-253	37	50	21.8	117	1.7	1/4	825	6.1	3/4	201	520
4PHP15E60P	208-230/60/1	197-253	41	60	25	134	1.7	1/4	825	6.1	3/4	171	520

NOTE: Weights are product weights without packaging material.

Performance

Model	Cooling					Heating				
	SEER	EER	Rated AHRI Capacity ¹ BTUH	Rated Sensible Capacity BTUH	CFM	47°		HSPF	17°	
						BTUH	COP		BTUH	COP
4PHP15E24P	15.0	12.0	22,800	17,800	800	22,000	3.6	8.0	14,000	2.3
4PHP15E30P	14.0	11.5	28,200	21,700	1000	28,000	3.6	8.0	17,500	2.4
4PHP15E36P	14.0	11.5	35,000	27,400	1200	33,000	3.6	8.0	20,200	2.4
4PHP15E42P	15.0	12.0	39,500	28,400	1400	40,000	3.5	8.0	24,800	2.3
4PHP15E48P	14.0	11.5	48,000	36,000	1600	47,000	3.4	8.0	29,000	2.3
4PHP15E60P	14.0	11.5	56,500	40,700	1800	55,500	3.5	8.0	33,600	2.4

Blower Performance

Model	"ADJUST"	0 through 0.80 in. w.g. (0 through 200 Pa) External Static Pressure Range											
		"COOL"				"HEAT"				"CONTINUOUS FAN" Speed			
		A	B	C	D	A	B	C	D	A	B	C	D
		cfm	cfm	cfm	cfm	cfm	cfm	cfm	cfm	cfm	cfm	cfm	cfm
4PHP15E24P 4PHP15E30P	+	1150	920	690	1035	1150	1150	1150	1150	575	460	345	520
	NORM	1000	800	600	900	1000	1000	1000	1000	500	400	300	450
	-	850	680	510	765	1000	1000	1000	1000	425	340	300	385
4PHP15E36P	+	1380	1150	920	1265	1380	1380	1150	1150	690	575	460	635
	NORM	1200	1000	800	1100	1200	1200	1000	1000	600	500	400	550
	-	1020	850	680	935	1200	1200	1000	1000	510	425	350	470
4PHP15E42P 4PHP15E48P 4PHP15E60P	+	2070	1840	1610	1380	1610	1610	1610	1610	1035	920	805	690
	NORM	1800	1600	1400	1200	1400	1400	1400	1400	900	800	700	600
	-	1530	1360	1190	1020	1400	1400	1400	1400	765	680	595	510

Heating Performance Extended Ratings

Model	Outdoor Temp - DB/WB °F									
	0/0		17/15		35/33		47/43		62/56	
	Btuh	kW	Btuh	kW	Btuh	kW	Btuh	kW	Btuh	kW
4PHP15E24P	8,800	1.72	14,000	1.78	19,500	1.85	23,200	1.89	27,800	202
4PHP15E30P	10,400	2.02	17,500	2.18	25,000	2.36	30,000	2.48	36,300	2.84
4PHP15E36P	12,500	2.39	20,200	2.52	28,400	2.66	33,800	2.75	40,600	3.04
4PHP15E42P	15,900	3.14	24,800	3.23	34,200	3.33	40,500	3.39	48,400	3.59
4PHP15E48P	17,000	3.40	29,000	3.70	41,000	4.01	49,000	4.22	59,000	4.88
4PHP15E60P	22,300	3.15	33,000	4.11	46,700	4.31	55,500	4.52	66,750	4.73

Cooling Performance Extended Ratings

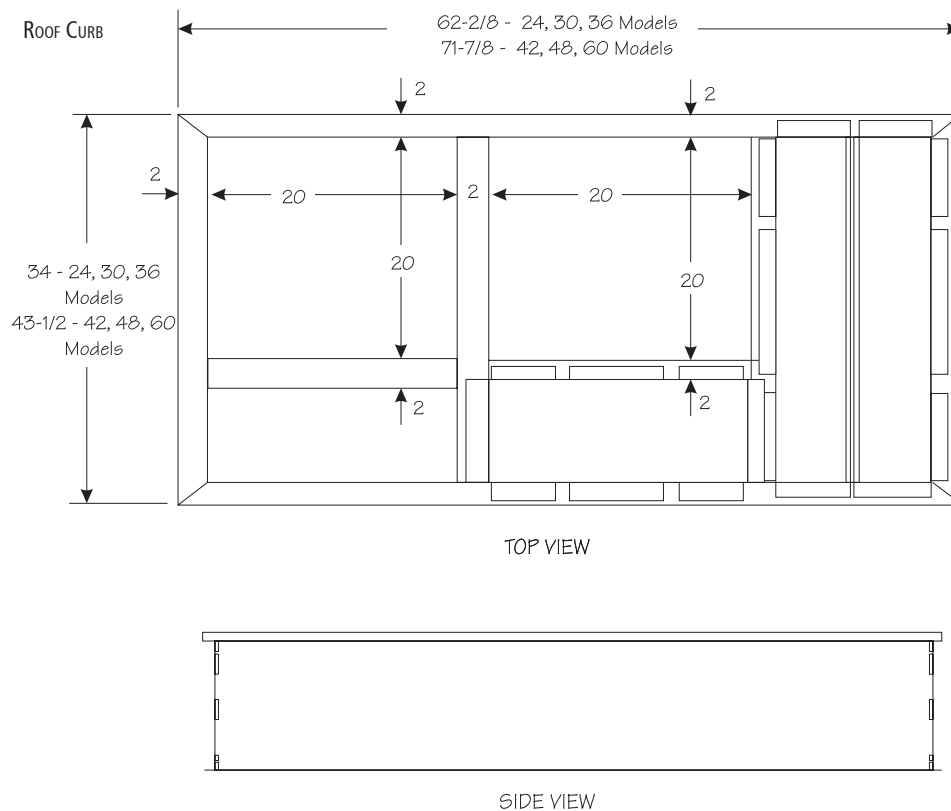
Model	Indoor Temp DB/ WB °F	Outdoor Temp - DB°F														
		65°			82°			95°			105°			115°		
		Btuh	S/T	kW	Btuh	S/T	kW	Btuh	S/T	kW	Btuh	S/T	kW	Btuh	S/T	kW
4PHP15E24P	85/72	28,300	.66	1.64	26,200	.68	1.73	25,800	.71	1.94	23,900	.74	2.00	22,000	.77	2.29
	80/67	26,400	.73	1.48	25,300	.73	1.68	24,000	.78	1.90	21,000	.83	2.09	19,300	.88	2.27
	75/63	25,200	.74	1.46	24,000	.73	1.65	21,600	.82	1.87	19,400	.88	2.06	17,100	.93	2.24
	75/57	21,900	1.00	1.40	21,400	1.00	1.60	19,200	1.00	1.80	17,300	1.00	2.00	15,200	1.00	2.20
4PHP15E30P	85/72	34,200	.65	2.09	31,700	.67	2.20	31,100	.70	2.47	28,900	.73	2.68	26,600	.76	2.92
	80/67	31,900	.72	1.89	30,500	.72	2.15	29,000	.77	2.42	26,100	.82	2.66	23,300	.87	2.89
	75/63	30,500	.73	1.86	29,000	.72	2.10	26,100	.81	2.38	23,400	.86	2.62	20,700	.92	2.86
	75/57	26,500	1.00	1.80	25,800	1.00	2.10	23,200	1.00	---	20,800	1.00	2.60	18,400	1.00	2.80
4PHP15E36P	85/72	42,500	.65	2.59	39,300	.67	2.73	38,600	.70	3.06	35,800	.73	3.33	33,100	.76	3.62
	80/67	39,600	.72	2.34	37,900	.72	2.66	36,000	.77	3.00	32,400	.72	3.29	28,900	.87	3.59
	75/63	37,800	.73	2.31	36,000	.72	2.61	32,400	.81	2.95	29,000	.86	3.25	25,700	.92	3.54
	75/57	32,900	1.00	2.30	32,000	1.00	2.60	28,800	1.00	2.90	25,800	1.00	3.20	22,900	1.00	3.50
4PHP15E42P	85/72	47,200	.61	2.76	43,700	.63	2.91	42,900	.66	3.26	39,800	.68	3.55	36,700	.71	3.87
	80/67	44,000	.68	2.50	42,100	.67	2.84	40,000	.72	3.20	36,000	.77	3.51	32,100	.81	3.83
	75/63	42,000	.69	2.46	40,000	.68	2.78	36,000	.76	3.15	32,300	.81	3.46	28,500	.86	3.78
	75/57	36,500	1.00	2.40	35,600	1.00	2.70	32,000	1.00	3.10	28,700	1.00	3.40	25,400	1.00	3.70
4PHP15E48P	85/72	60,200	.63	3.66	55,700	.65	3.87	54,700	.68	4.34	50,800	.71	4.71	46,800	.74	5.13
	80/67	56,100	.71	3.32	53,700	.70	3.77	51,000	.75	4.25	46,000	.80	4.67	40,900	.85	5.08
	75/63	53,600	.71	3.27	51,100	.71	3.70	45,900	.79	4.18	41,100	.84	4.60	36,400	.89	5.02
	75/57	46,600	1.00	3.20	45,500	1.00	3.60	40,900	1.00	4.10	36,600	1.00	4.50	32,400	1.00	4.90
4PHP15E60P	85/72	71,500	.61	3.56	65,800	.63	4.24	61,500	.65	4.76	56,300	.67	5.32	51,200	.69	5.37
	80/67	67,400	.68	3.52	61,600	.70	4.14	56,500	.72	4.70	50,700	.73	5.15	46,100	.77	5.33
	75/63	62,900	.71	3.49	55,900	.73	4.16	50,500	.74	4.67	46,300	.78	5.23	42,000	.81	5.28
	75/57	54,700	1.00	3.40	49,800	1.00	4.10	44,900	1.00	4.60	41,200	1.00	5.10	37,400	1.00	5.20

Heat Strip Electrical

Model	Heater Model	Unit Supply Single Phase	Heater kW	Minimum Circuit Ampacity 1	Maximum Fuse / HACR Brkr. 1	Minimum Circuit Ampacity 2	Maximum Fuse / HACR Brkr. 2	Minimum Circuit Ampacity Single	Maximum Fuse / HACR Brkr. Single
4PHP15E24P	PHK05BP	240	5.0	29.7	30			49.8	50
		208	3.8	26.2	30			46.4	50
	PHK07BP	240	7.5	42.7	45			62.9	70
		208	5.6	37.5	40			57.7	60
	PHK10BP	240	10.0	55.7	60			75.9	80
		208	7.5	48.8	50			68.9	70
4PHP15E30P	PHK05BP	240	5.0	29.7	30			50.6	60
		208	3.8	26.2	30			47.2	50
	PHK07BP	240	7.5	42.7	45			63.7	70
		208	5.6	37.5	40			58.5	60
	PHK10BP	240	10.0	55.7	60			76.7	80
		208	7.5	48.8	50			69.7	70
4PHP15E36P	PHK05BP	240	5.0	30.7	35			54.6	60
		208	3.8	27.2	30			51.2	60
	PHK07BP	240	7.5	43.7	45			67.7	70
		208	5.6	38.5	40			62.5	70
	PHK10BP	240	10.0	56.7	60			80.7	90
		208	7.5	49.8	50			73.7	80
PHK15CP	240	15.0	56.7	60	26	30	106.7	110	
	208	11.3	49.8	50	22.6	25	96.3	100	
4PHP15E42P	PHK05BP	240	5.0	33.7	35			57.6	60
		208	3.8	30.2	35			54.2	60
	PHK07BP	240	7.5	46.7	50			70.7	80
		208	5.6	41.5	45			65.5	70
	PHK10BP	240	10.0	56.7	60			83.7	90
		208	7.5	49.8	50			76.7	80
	PHK15CP	240	15.0	59.7	60	26	30	109.7	110
		208	11.3	52.8	60	22.6	25	99.3	100
PHK20CP	240	20.0	59.7	60	52.1	60	135.8	150	
	208	15.0	52.8	60	45.1	50	121.9	125	
4PHP15E48P	PHK05BP	240	5.0	33.7	35			64	80
		208	3.8	30.2	35			60.6	70
	PHK07BP	240	7.5	46.7	50			77.1	90
		208	5.6	41.5	45			71.9	80
	PHK10BP	240	10.0	56.7	60			90.1	100
		208	7.5	49.8	50			83.1	90
	PHK15CP	240	15.0	59.7	60	26	30	116.1	125
		208	11.3	52.8	60	22.6	25	105.7	110
PHK20CP	240	20.0	59.7	60	52.1	60	142.2	150	
	208	15.0	52.8	60	45.1	50	128.3	150	
4PHP15E60P	PHK05BP	240	5.0	33.7	35			65	80
		208	3.8	30.2	35			64.6	80
	PHK07BP	240	7.5	46.7	50			81.1	90
		208	5.6	41.5	45			75.9	90
	PHK10BP	240	10.0	56.7	60			94.1	100
		208	7.5	49.8	50			87.1	100
	PHK15CP	240	15.0	59.7	60	26	30	120.1	125
		208	11.3	52.8	60	22.6	25	109.7	110
PHK20CP	240	20.0	59.7	60	52.1	60	146.2	150	
	208	15.0	52.8	60	45.1	50	132.3	150	

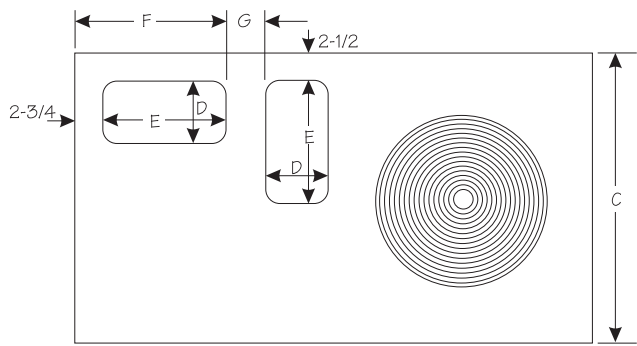
Accessories

Catalog Number	Description	Used with
92M51	Lift Bracket	All
92M54	Internal Filter Kit	4PHP15E 24, 30, 36
92M55	Internal Filter Kit	4PHP15E 42, 48, 60
92M99	Roof Curb 8 inch height	4PHP15E 24, 30, 36
93M00	Roof Curb 14 inch height	4PHP15E 24, 30, 36
93M01	Roof Curb 8 inch height	4PHP15E 42, 48, 60
93M02	Roof Curb 14 inch height	4PHP15E 42, 48, 60
10W47	5 kW Electric Heater Kit	All
10W48	7.5 kW Electric Heater Kit	All
10W49	10 kW Electric Heater Kit	All
10W50	15 kW Electric Heater Kit	4PHP15E 36-60
10W51	20 kW Electric Heater Kit	4PHP15E 42-60
13W88	Single point power for PHK05	5 kW Electric Heater Kit
13W89	Single point power for PHK07	7 kW Electric Heater Kit
13W90	Single point power for PHK10	7 kW Electric Heater Kit
13W91	Single point power for PHK15, 20	15 and 20 kW Electric Heater Kit

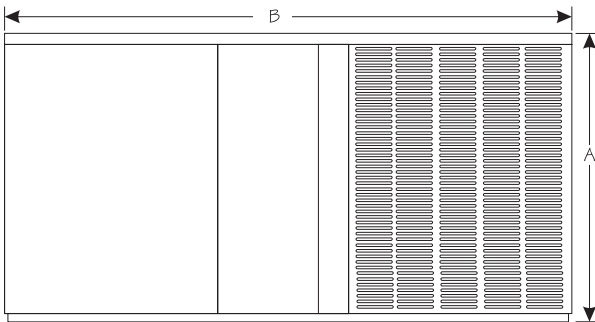


Dimensions (in.)

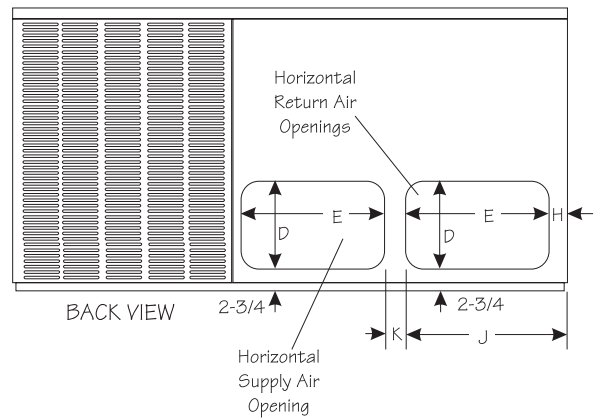
Model	A	B	C	D	E	F	G	H	J	K	L
4PHP15E24P	34-1/4	65-3/8	36-1/2	11-1/4	17-1/4	20	8-1/2	3	20-1/4	4-1/2	19
4PHP15E30P											
4PHP15E36P											
4PHP15E42P	38-7/4	75	46	11-1/4	19-1/4	20	9-1/4	3-1/4	22-1/4	4	16-1/4
4PHP15E48P											
4PHP15E60P											



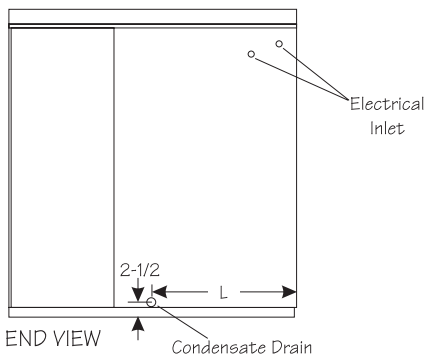
TOP VIEW



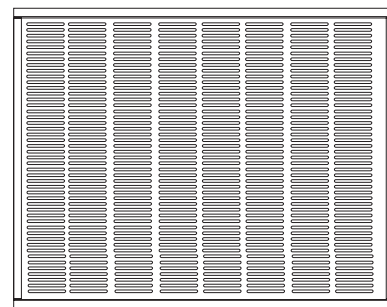
FRONT VIEW



BACK VIEW



END VIEW



END VIEW

Revisions		
Section	Page #	Description
Electrical and Physical Data	2	Ratings table revised
Performance	2	Rating tables revised
Cooling Performance Extended Ratings	4	Added Indoor Temp DB/WB °F 75/57
Heat Strip Electrical	5	Updated ratings

All specifications and illustrations
subject to change without notice
and without incurring obligations.

